



Honors World Prematurity Day 2016



# Implementation Of Newborns Individualized Developmental Care in Neonatal Intensive Care Units: The perspective of Health Care Providers

**Jila Mirlashari**

**PhD in Nursing**

**Post Doctoral Fellow , Department of Obstetrics and Gynecology**

**WHRI, UBC**

**Associate Professor , Tehran University of Medical Science**

**Certified NIDCAP Professional**

**UNICEF and The Health Ministry**

Jila Mirlashari UBC



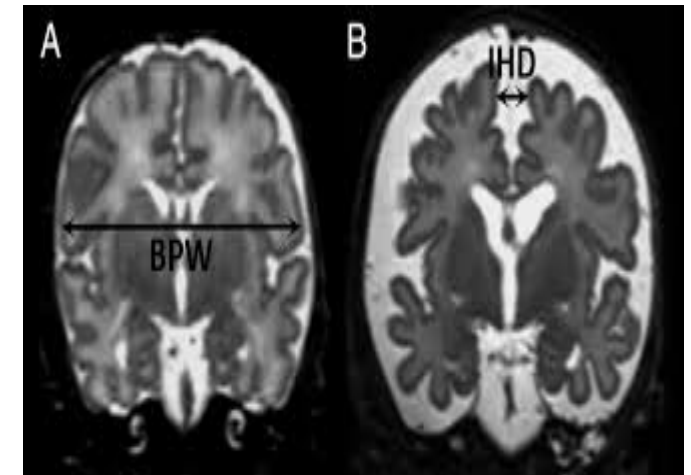
## Why developmental care is necessary for premature newborns in NICU :

- Brain imaging confirms that hospitalization in NICU and harmful stimulation create regional changes to the structure and function of the premature infant's brain.
- Cerebral cortex exposed to inappropriate stimuli has smaller diameters in the frontal and parietal areas.



## Why developmental care is necessary for premature newborns in NICU :

- Measurable changes have occurred in the communication function of their temporal lobe.
- Visible behavioral changes in neurodevelopmental examinations (Smith et al., 2011).



## Why developmental care is necessary for premature newborns in NICU :

- During a time of rapid brain growth, any positive or negative environmental stimulation can have a lasting effect on the neural cells development of premature baby.





## Why developmental care is necessary for premature newborns in NICU :

- Between 15% and 25% of premature newborns admitted to the NICU will eventually develop some type of growth and developmental disorders, including motor, hearing, visual, cognitive, behavioral and verbal problems, and attention-deficit/hyperactivity disorder (Haumont, 2014).
- These findings reveal the importance of implementing neurodevelopmental care during NICU admission.



# Newborns Individualized Developmental Care Assessment Program

- Developmental FCC
- Light and sound
- Non-nutritional suckling
- Observation and Interpretation of newborn's behavior and non verbal communication





- **Relationship based approach toward care**
- **Swaddle bath**
- **Developmental handling and developmental positioning**
- **Skin to skin care**
- **Reflection**



# The purpose of this study was to investigate nurses and physicians experiences of implementing the NIDCAP model

- Data were collected by face-to-face and semi-structured interviews with 15 nurses and physicians.
- Analysis was guided by principles of thematic analysis as per Lundman and Graham.



Jila Mirlashari UBC





**Results:** Six themes and 20 sub-themes were constructed during data analysis.

- *NIDCAP as a milestone*
- *Helping to rebuild the core of family*
- *Caregiver excellence*
- *Realism towards the feasibility of NIDCAP*
- *Caring for the caregiver*



**Thank you for your attention**