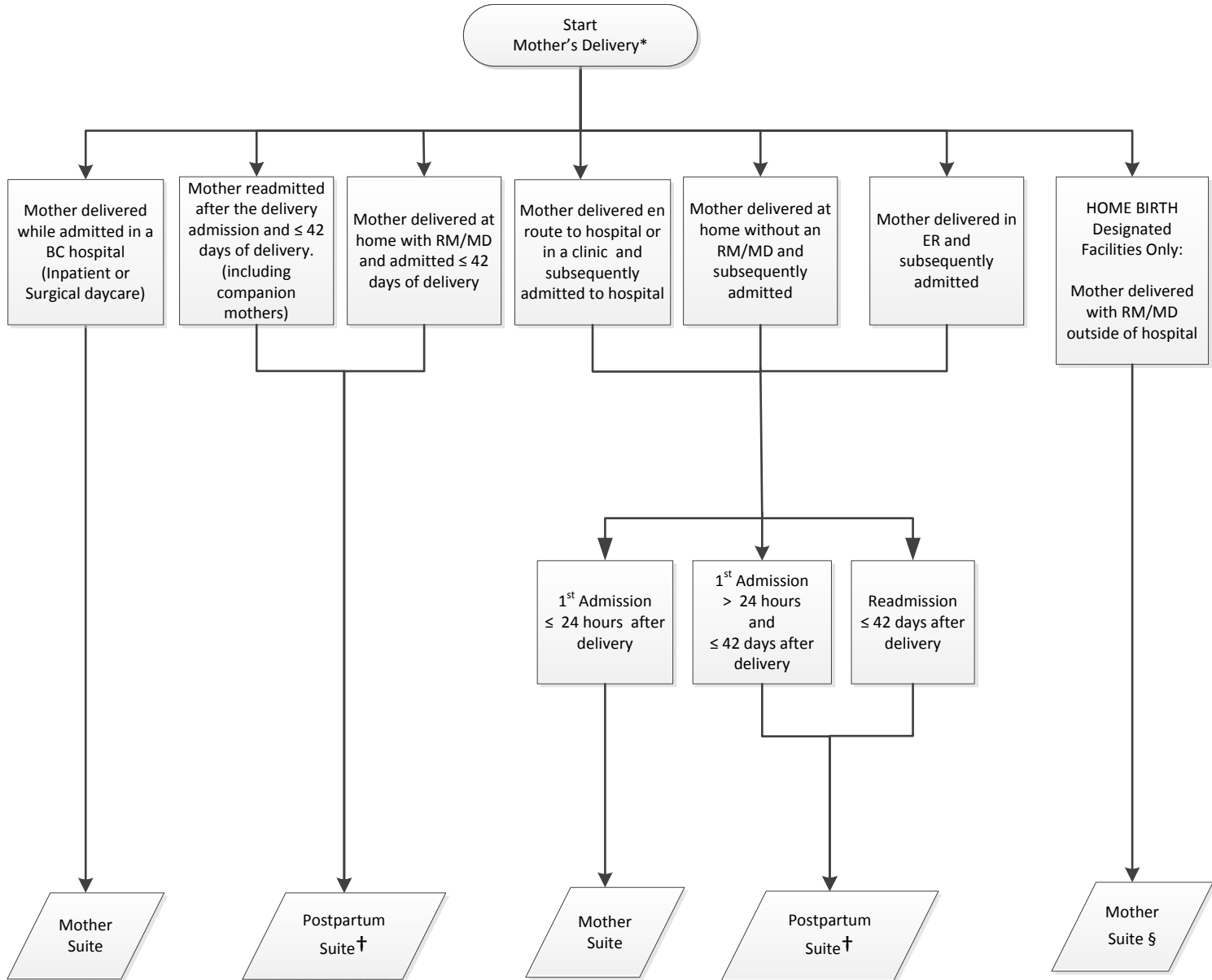




Perinatal Services BC

An agency of the Provincial Health Services Authority

Instructions: Follow the pathway that best describes the scenario you encountered. If the situation does not follow any of the pathways below, please contact Perinatal Services BC.



* Deliveries include both livebirths and stillbirths (delivered ≥ 20 weeks gestation or ≥ 500 g). For clarification of stillbirth and livebirth scope, please see the PDR Reference Manual Version 6.01 Revised April 2014, Section 10.7 Adapted Case Scenarios for Registration of births and Stillbirths in British Columbia. http://www.perinatalservicesbc.ca/Documents/Data-Surveillance/PDR/Resources-Coders/PDR_ReferenceManual_2014.pdf

† Multiple Postpartum Admissions: If a mother has multiple postpartum admissions (≤ 42 days), complete a separate Postpartum Suite for each admission.

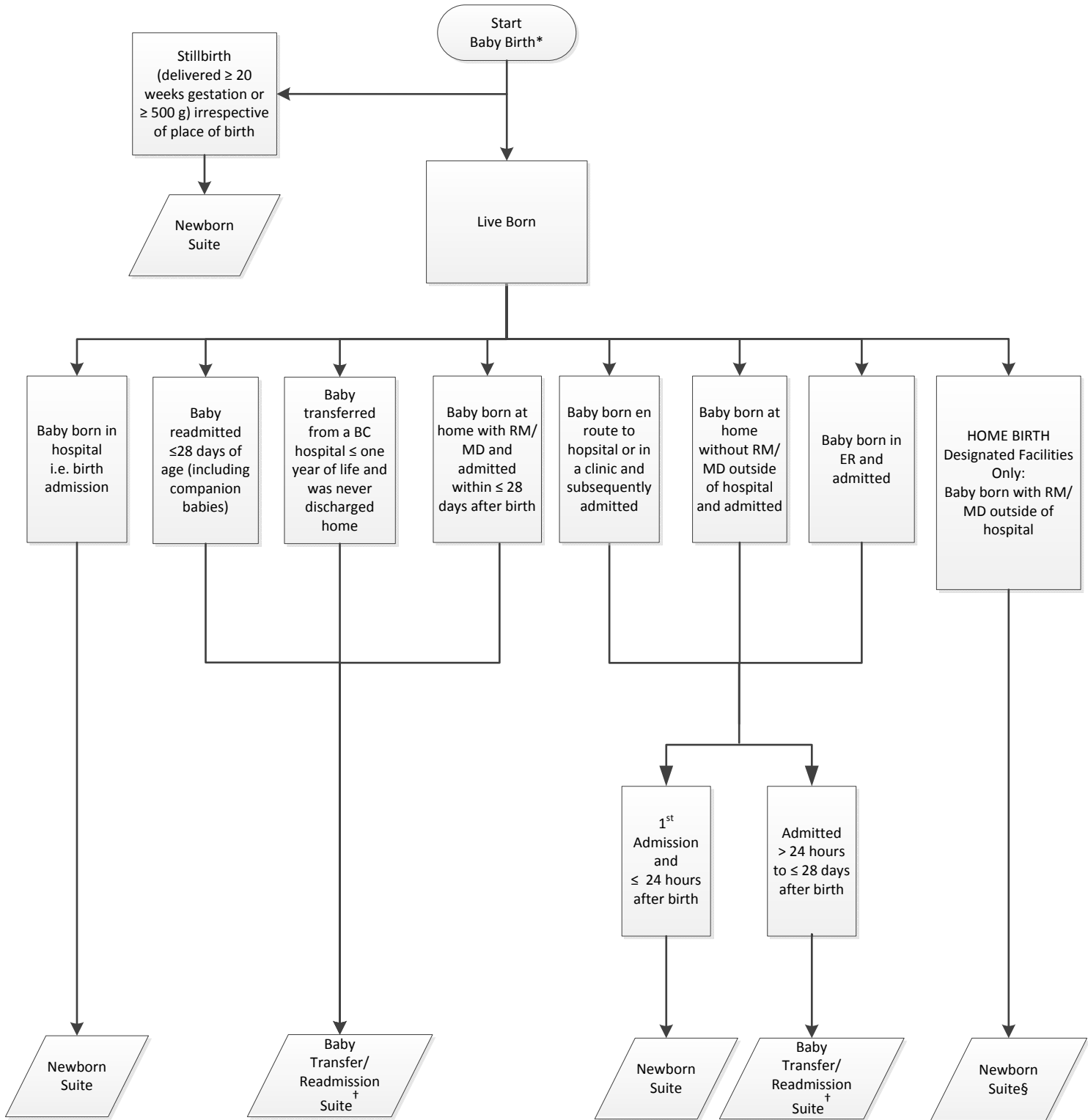
§ Home Birth Designated Facilities Only: Starting April 1, 2016, select coders from designated facilities are responsible for abstracting home birth documents.



Perinatal Services BC

An agency of the Provincial Health Services Authority

Instructions: Follow the pathway that best describes the scenario you encountered. If the situation does not follow any of the pathways below, please contact Perinatal Services BC.



* Deliveries include both livebirths and stillbirths (delivered ≥20 weeks gestation or ≥500 g). For clarification of stillbirth and livebirth scope, please see the PDR Reference Manual Version 6.01 Revised April 2014, Section 10.7 Adapted Case Scenarios for Registration of births and Stillbirths in British Columbia. http://www.perinataleservicesbc.ca/Documents/Data-Surveillance/PDR/Resources-Coders/PDR_ReferenceManual_2014.pdf

† Multiple Transfer/Readmissions: If a baby has multiple transfers or readmissions, complete a separate Transfer/Readmission Suite for each admission.

§ Home Birth Designated Facilities Only: Starting April 1, 2016, select coders from designated facilities are responsible for abstracting home birth documents.

Mother Delivery and Admission Scenarios			
Delivery* Description (Include Livebirths and Stillbirths - Delivered ≥ 20 Weeks Gestation or ≥ 500 Grams)	Admission	Admit Time	Suite
Delivered In Hospital (Includes Inpatients or Surgical Daycares)	Delivery Admission	Delivery Admission	Mother Suite
	Postpartum Admission	≤ 42 days after delivery	Postpartum Suite† (Includes Companion Moms)
Delivered in Hospital's Emergency Room	1st Admission after Delivery	≤ 24 hours after delivery	Mother Suite
		>24 hours and ≤ 42 days after delivery	Postpartum Suite† (Includes Companion Moms)
	Readmission after Delivery	≤ 42 days after delivery	Postpartum Suite† (Includes Companion Moms)
En Route to Hospital or In a Clinic	1st Admission after Delivery	≤ 24 hours after delivery	Mother Suite
		>24 hours and ≤ 42 days after delivery	Postpartum Suite† (Includes Companion Moms)
	Readmission after Delivery	≤ 42 days after delivery	Postpartum Suite† (Includes Companion Moms)
Delivered at Home WITHOUT a Registered Midwife or Physician	1st Admission after Delivery	≤ 24 hours after delivery	Mother Suite
		> 24 hours and ≤ 42 days after delivery	Postpartum Suite† (Includes Companion Moms)
	Readmission after Delivery	≤ 42 days after delivery	Postpartum Suite† (Includes Companion Moms)
Home Birth ATTENDED by a Registered Midwife or Physician at the Delivery	N/A	N/A	Home Birth Designated Facilities Only Mother Suite §
	Admission after Delivery	≤ 42 days after delivery	Postpartum Suite† (Includes Companion Moms)

* For clarification of stillbirth and livebirth scope, please see the PDR Reference manual, Section 10.7 Adapted Case Scenarios for Registration of Births and Stillbirths in British Columbia.

†**Multiple Postpartum Admissions:** If a mother has multiple postpartum admissions (≤ 42 days), complete a separate Postpartum Suite for each admission.

§**Home Birth Designated Facilities Only:** Starting April 1, 2016, select coders from designated facilities are responsible for abstracting home birth documents.

Baby Birth and Admission Scenarios			
Birth* Description (Include Livebirths and Stillbirths - Delivered ≥ 20 Weeks Gestation or ≥ 500 Grams)	Admission	Admit Time	Suite
Born In Hospital (Includes Inpatients)	Birth Admission	Birth Admission	Newborn Suite
	Readmission	≤ 28 days after birth	Transfer/ Readmission Suite† (Includes Companion Babies)
	Transfer from another hospital and never discharged home up to 1 year of age	≤ 1 year after birth	
Born in Hospital's Emergency Room	1st Admission after Birth	≤ 24 hours after birth	Newborn Suite
	Readmission	> 24 hours to ≤ 28 days after birth	Transfer/ Readmission Suite† (Includes Companion Babies)
En Route to Hospital or In a Clinic	1st Admission after Birth	≤ 24 hours after birth	Newborn Suite
	Readmission	> 24 hours to ≤ 28 days after birth	Transfer/ Readmission Suite† (Includes Companion Babies)
Born at Home WITHOUT a Registered Midwife or Physician	1st Admission after Birth	≤ 24 hours after birth	Newborn Suite
	Readmission	> 24 hours to ≤ 28 days after birth	Transfer/ Readmission Suite† (Includes Companion Babies)
Home Birth ATTENDED by a Registered Midwife or Physician at the Birth	N/A	N/A	Home Birth Designated Facilities Only Newborn Suite §
	Admission after Birth	≤ 28 days after birth	Transfer/ Readmission Suite† (Includes Companion Babies)

[* For clarification of stillbirth and livebirth scope, please see the PDR Reference manual, Section 10.7 Adapted Case Scenarios for Registration of Births and Stillbirths in British Columbia.](#)

†Multiple Transfer/Readmissions: If a baby has multiple transfer or readmissions, complete a separate Transfer/Readmission Suite for each admission.

§Home Birth Designated Facilities Only: Starting April 1, 2016, select coders from designated facilities are responsible for abstracting home birth documents.

PDR SUITE EXAMPLES

MOTHER AND NEWBORN SUITE (EXCLUDING HOMEBIRTHS)

Mother delivers in Emergency Department – Admitted as an inpatient after delivery

1. Mother delivers a healthy newborn in the emergency department of a BC hospital. Following the delivery both the mother and newborn are admitted to hospital as inpatients.

Key Considerations: This mother and newborn are admitted as inpatients < 24 hours after delivery.

Suites Completed: The Mother Suite and Newborn Suite are completed since the admission is < 24 hours after delivery.

POSTPARTUM AND BABY TRANSFER/READMISSION SUITE (EXCLUDING HOMEBIRTHS)

Mother delivers in Emergency Department – Admitted as an inpatient >24 hours after delivery

2. Mother delivers a healthy newborn in an emergency department. Following the delivery, both the mother and newborn are fine and return home. Two days later, the mother develops a fever and both mother and baby are admitted to hospital.

Key Considerations: This mother and newborn are admitted > 24 hours after delivery.

Suites Completed: The Postpartum Suite and Baby/Transfer Readmission Suite are completed since the admission is > 24 hours after delivery.

Baby Transfer/Readmission Suite Example

3. Mother delivers a healthy newborn in an emergency department and goes home with her baby after delivery. The baby develops jaundice two days after birth and is admitted to hospital for care.

Key Considerations: This is the first inpatient hospital admission for a baby who is > 24 hours of age.

Suite Completed: For the baby, the Baby Transfer/Readmission Suite is completed.

BIRTHS OUTSIDE HOSPITAL EXAMPLES

Homebirth with Registered Midwife and/or Physician – No Admission following Delivery/Birth

4. The mother vaginally delivers a healthy newborn at home with a registered midwife. There were no complications and the mother and newborn are not admitted to hospital after the delivery.

Key Considerations: This patient delivered at home with no complications and is not admitted to hospital following delivery. Starting Fiscal Year 2016/17 select facilities in each Health Authority will be completing the PDR for homebirths. The homebirth documents will be processed separately from inpatient health records at the facility.

Suites Completed: The abstracting of the delivery/birth will be done by the homebirth designated facility responsible for homebirth data collection. The Mother and Newborn Suites will be completed by the coders responsible for abstracting these cases.

Homebirth with Registered Midwife or Physician – Admission after Delivery/Birth

5. The mother vaginally delivers a healthy newborn at home with a registered midwife in attendance. The mother suffered a postpartum hemorrhage following the delivery and both the mother and newborn are transferred to hospital for care. They are admitted to hospital 3 hours after delivery.

Key Considerations: There is a complication following this delivery that resulted in both the mother and baby being transferred to hospital. Two sets of patient records will be produced from this episode.

- The first set of documents, the homebirth forms, will be submitted and collected by the designated homebirth facility.
- The second set of records will be a separate inpatient chart created by the facility for the postpartum and baby transfer admissions.

Suites Completed:

- The abstracting of the delivery/birth will be done by the facility responsible for homebirth data collection. The Mother and Newborn Suites will be completed by the coders responsible for abstracting homebirth cases.
- The transfer of both the mother and the baby resulted in inpatient hospital admissions. The coders at the facility where the mother and baby are admitted will complete the Postpartum and Baby Transfer Suites.

Homebirth with Registered Midwife or Physician – Admission after Delivery/Birth

6. The same mother (as above) develops a fever 2 weeks after her last hospital admission. She once again goes to hospital and is admitted for puerperal sepsis.

Key Considerations: This is a complication following the delivery and the mother is admitted to hospital for a second time.

Suite Completed: A Postpartum Suite is required for this admission.

Unattended homebirth – Admission to Hospital <24 hours following Delivery/Birth

7. The mother vaginally delivers a newborn precipitously at home. Paramedics arrive after the delivery of the newborn. The newborn has respiratory distress; IPPV via mask is given and the baby is taken via ambulance to hospital for care.

Key Considerations: This is an unattended homebirth and the newborn is transferred to hospital <24 hours after birth. The mother is not admitted to hospital with the newborn. When there is an unattended homebirth or no registered midwife or physician involved, homebirth data collection only occurs if there is admission to hospital. In this case, there will only be a suite completed for the newborn.

Suites Completed: For the newborn, this is the first hospital admission and it was ≤24 hours after birth so a Baby Newborn Suite is completed by the hospital where the baby was admitted.

Unattended homebirth – Admission to hospital > 24 hours after Delivery/Birth

8. The mother vaginally delivers a healthy newborn at home – no healthcare provider was in attendance. The day after the delivery the mother develops a fever and goes to the hospital where she is admitted for puerperal sepsis. This admission is >24 hours after delivery.

Key Considerations: This is an unattended homebirth where the mother develops complications >24 hours after delivery resulting in a hospital admission. The newborn is not admitted to hospital so only a suite for the mother's admission is required.

Suite Completed: For the mother, the Postpartum Suite is completed since the admission is >24 hours after delivery.

Unattended homebirth – Admission to hospital > 24 hours after Delivery/Birth

9. The mother vaginally delivers a healthy newborn at home without a registered midwife and/or physician present. Two days after delivery, the newborn develops jaundice and is taken to hospital. The baby is admitted to hospital for treatment and the mother is admitted as a companion well mother.

Key Considerations: This is an unattended homebirth where the baby requires hospitalization >24 hours after birth and the mother is also admitted.

Suites Completed: The Baby Transfer/Readmission Suite and the Postpartum Suite are required for the baby and mother.

En route Delivery

10. A mother delivers precipitously in a parking lot. Immediately following delivery both the mother and baby are admitted to hospital.

Key Considerations: This is considered to be an en route delivery where the mother and baby are admitted to hospital.

Suites Completed: The Mother Suite and Baby Newborn Suite are completed