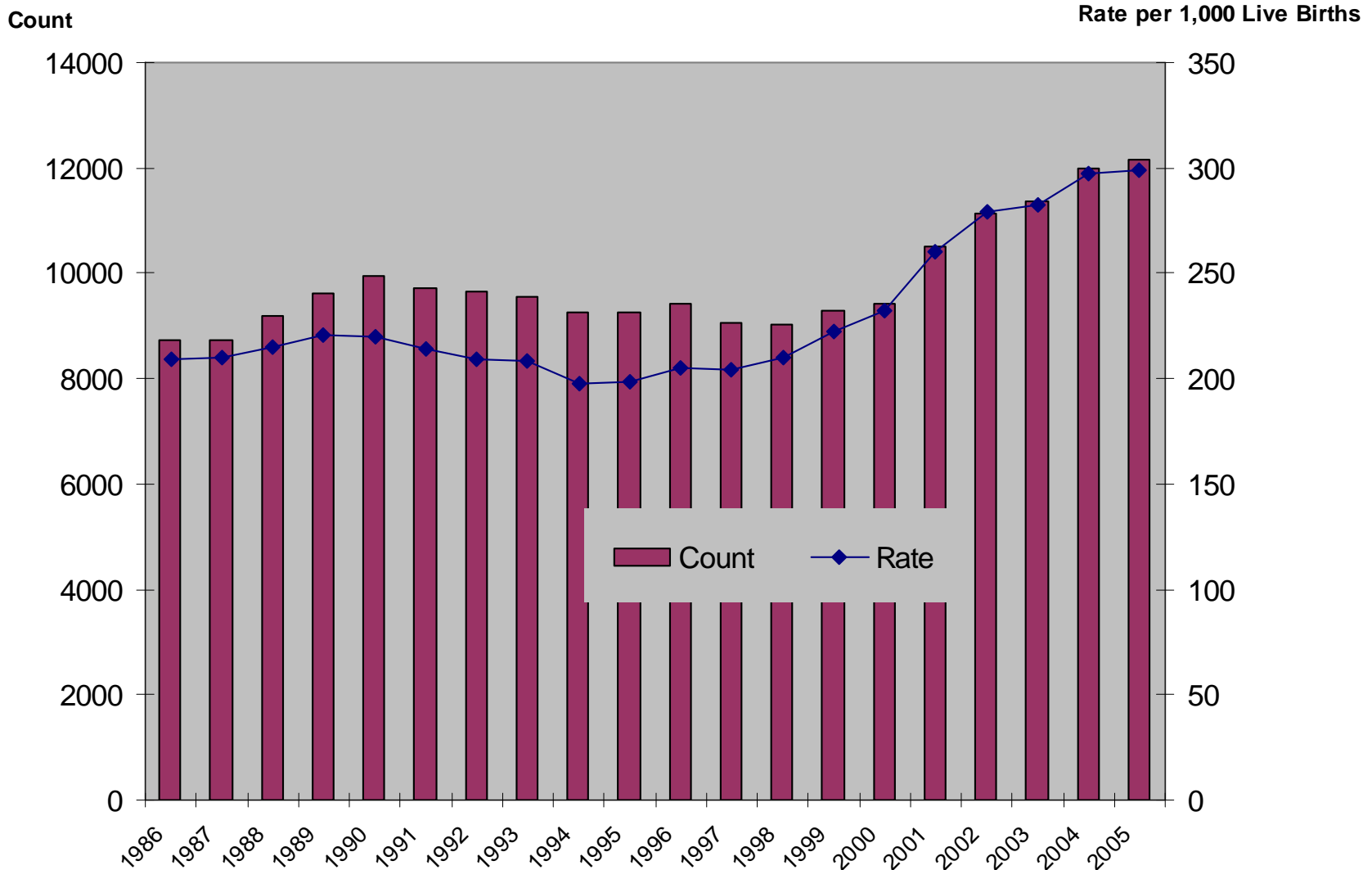
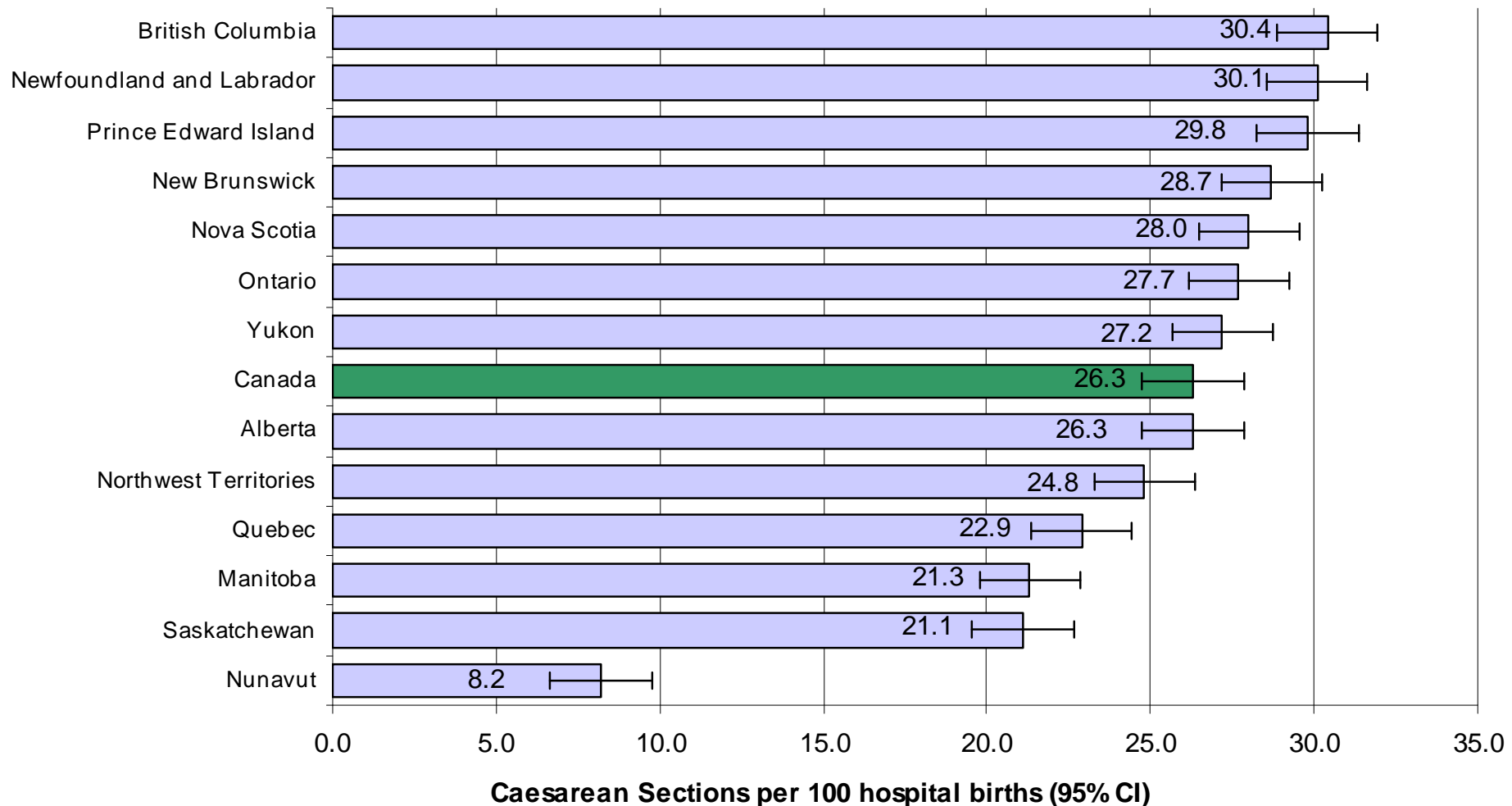


Caesarean sections in British Columbia, 1986 to 2005

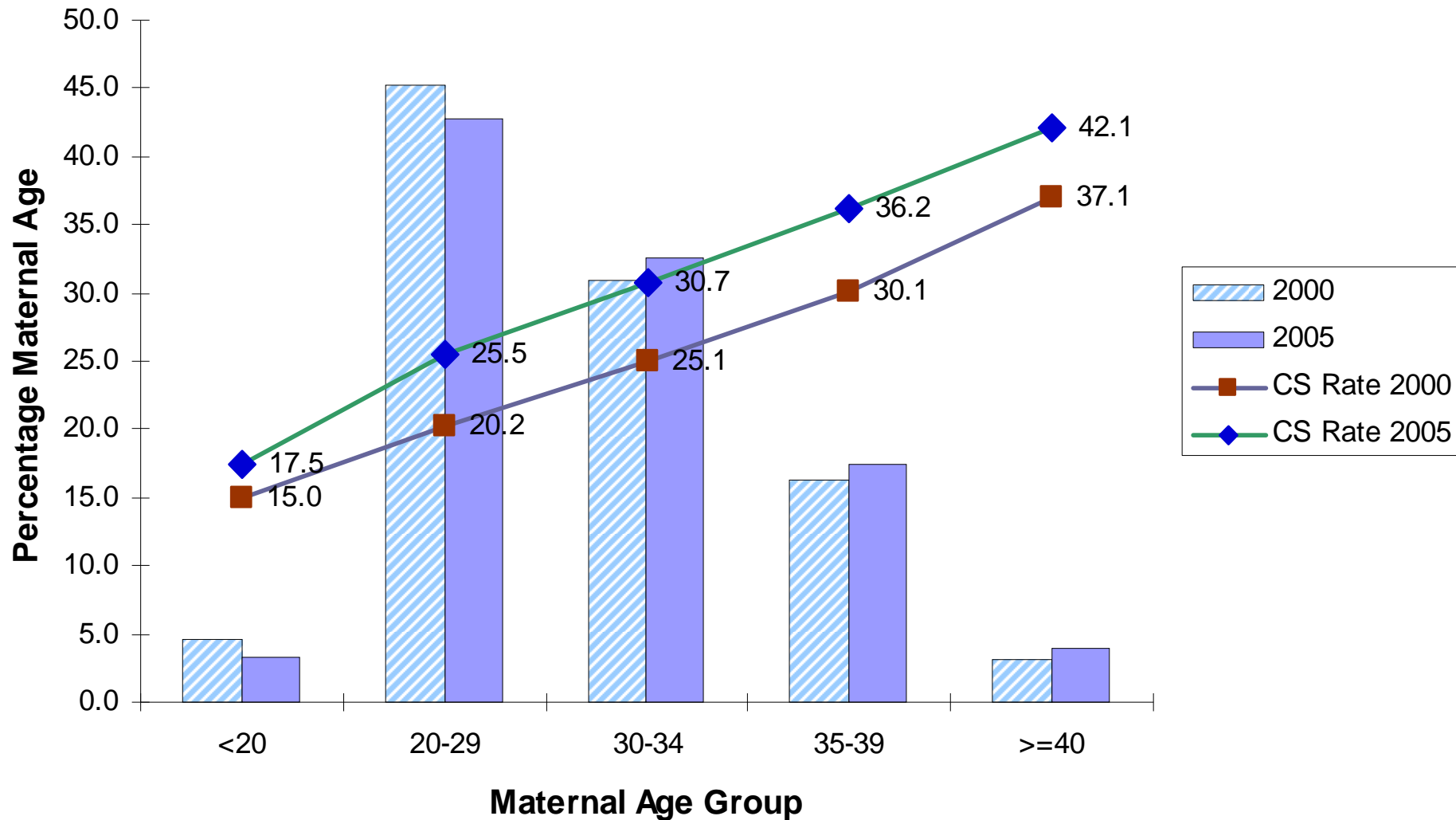


Caesarean Section Rates by Province/Territory in Canada, 2005/2006

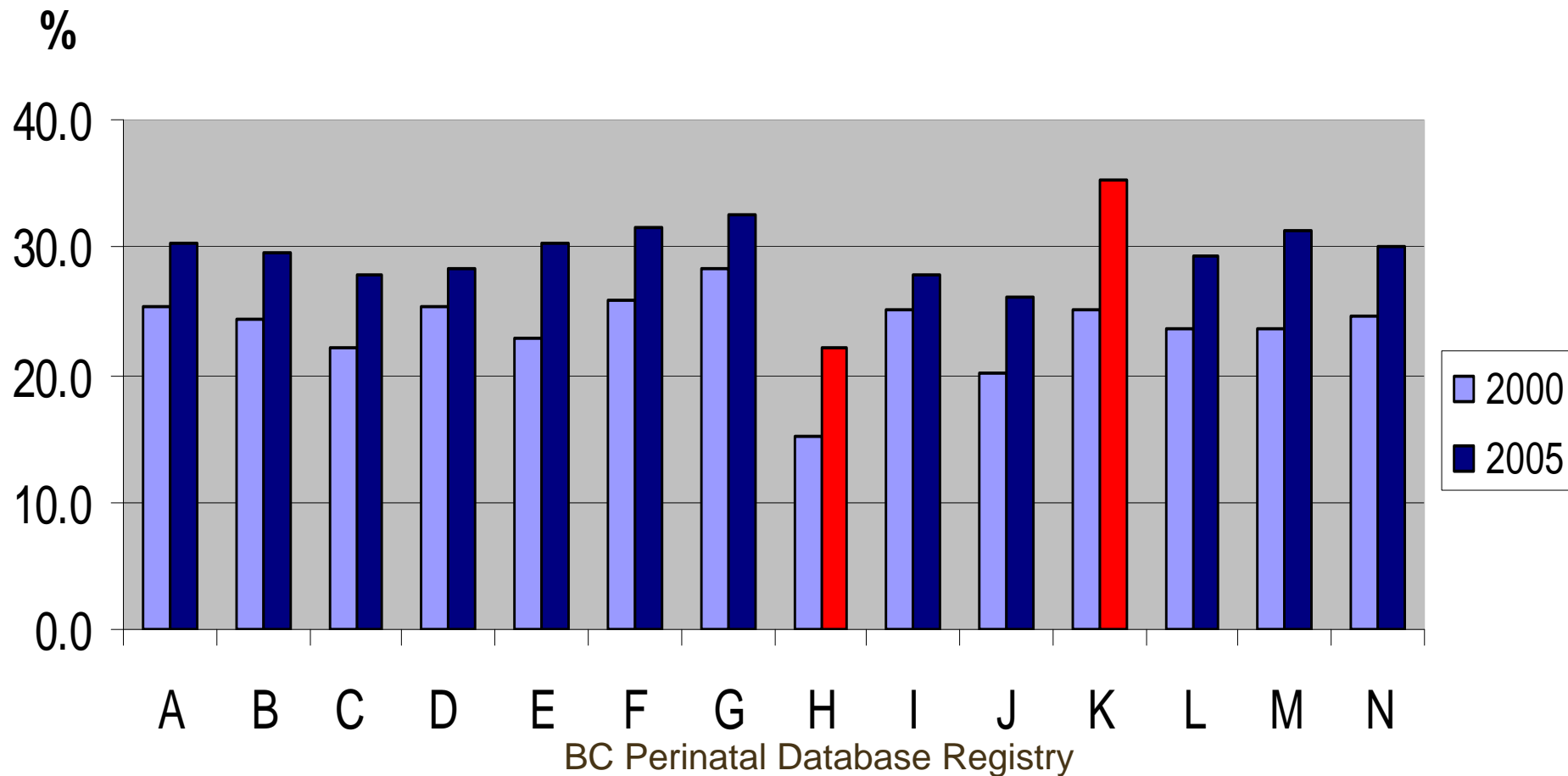


Source: Cesarean Birth Task Force Report 2008 (CIHI Health Indicators Report 2007)

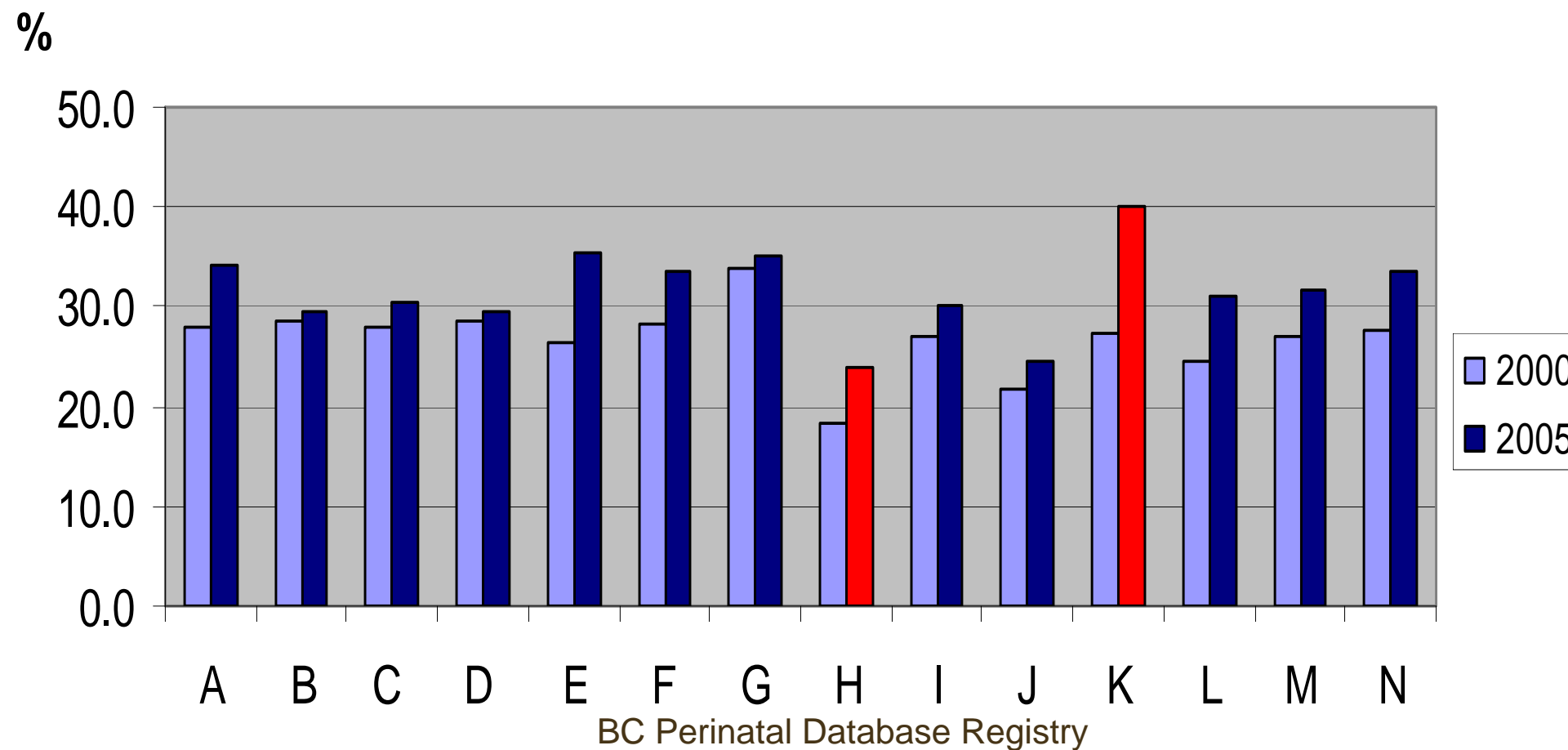
Caesarean Birth rate by Maternal Age Groups 2000 and 2005



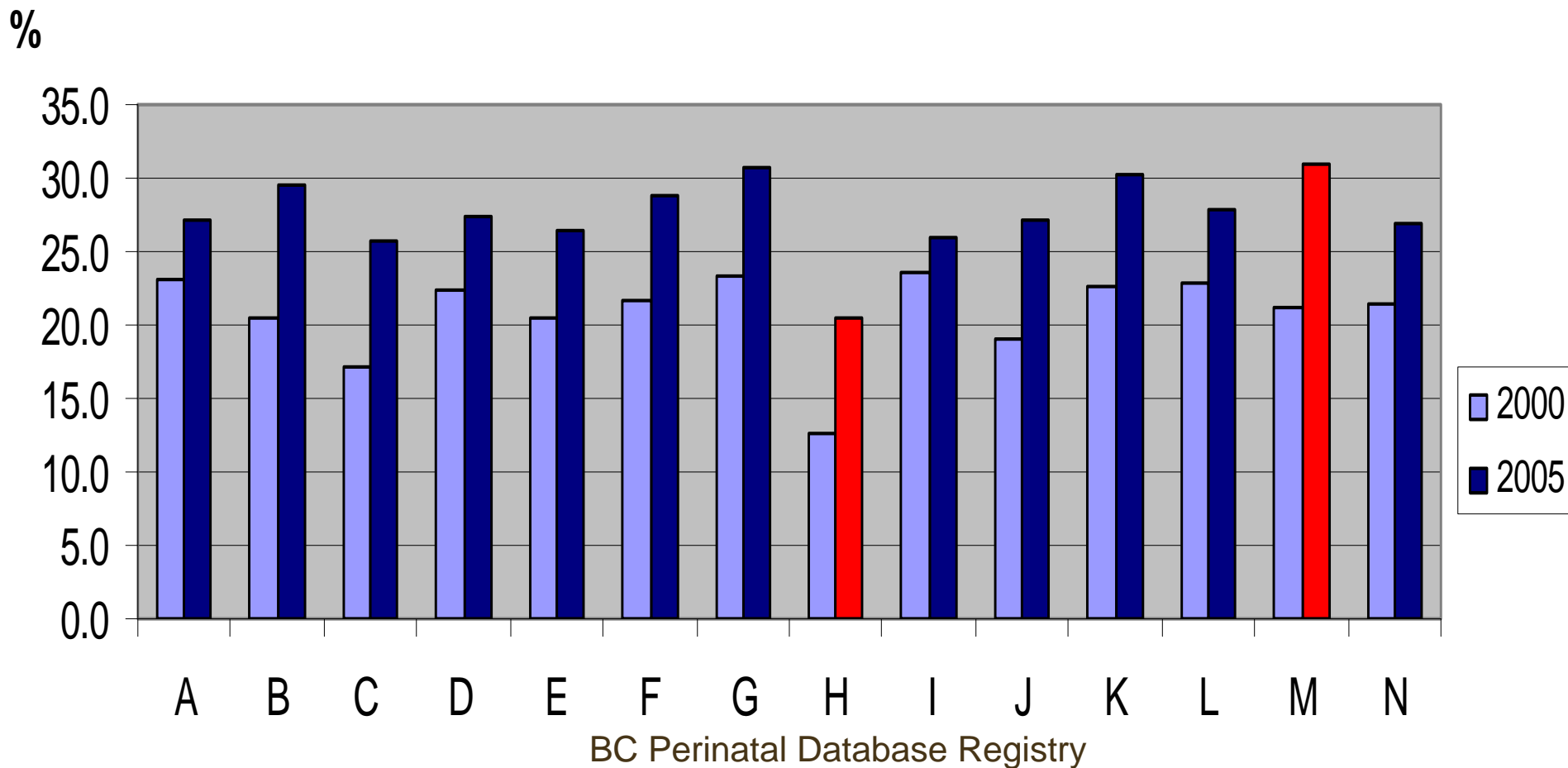
C/S Rate: Term Singleton



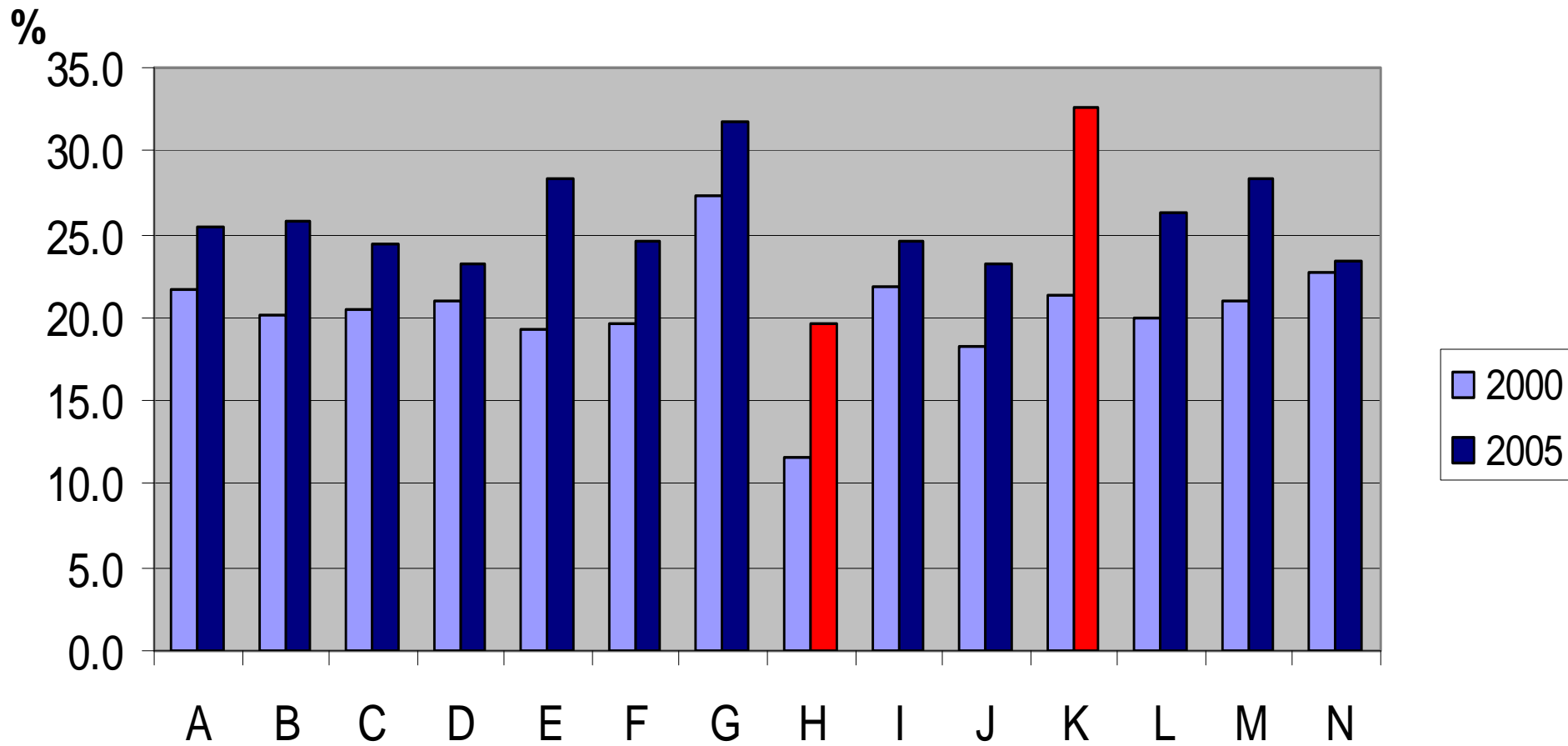
C/S Rate, Term Singleton, Nulliparas



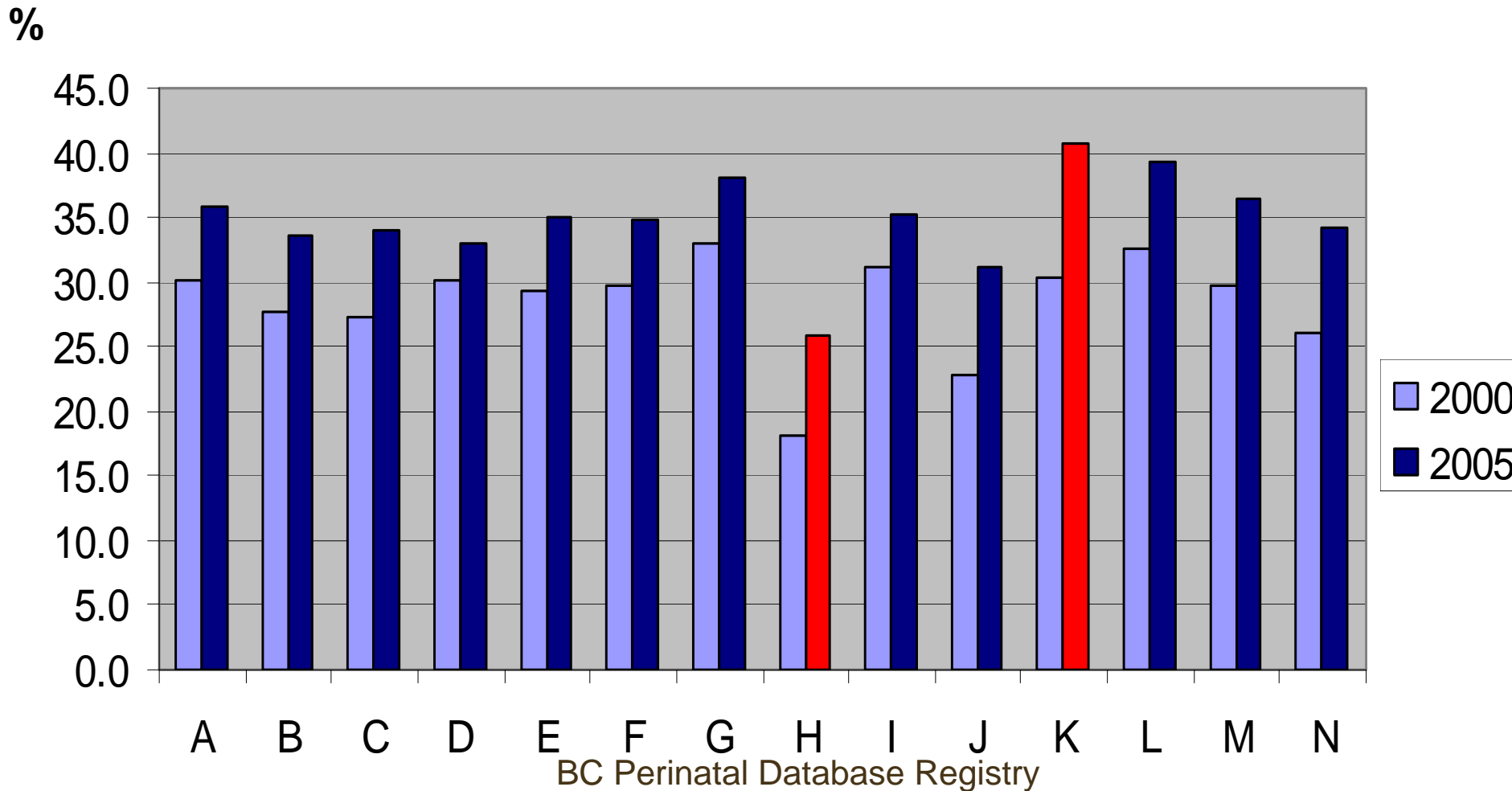
C/S Rate: Term Singletons, Parity ≥ 1



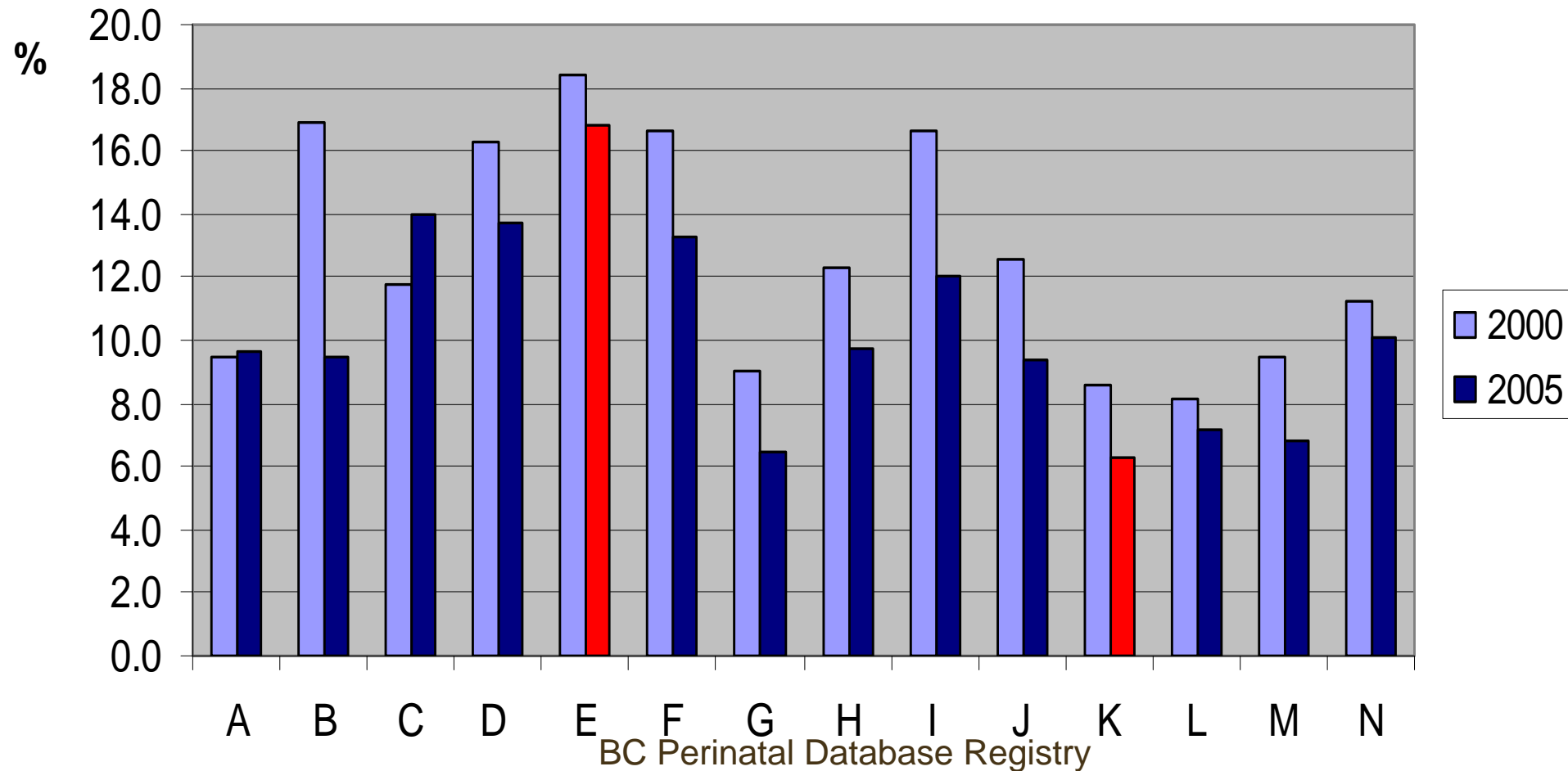
C/S Rate by Maternal Age < 30 Years



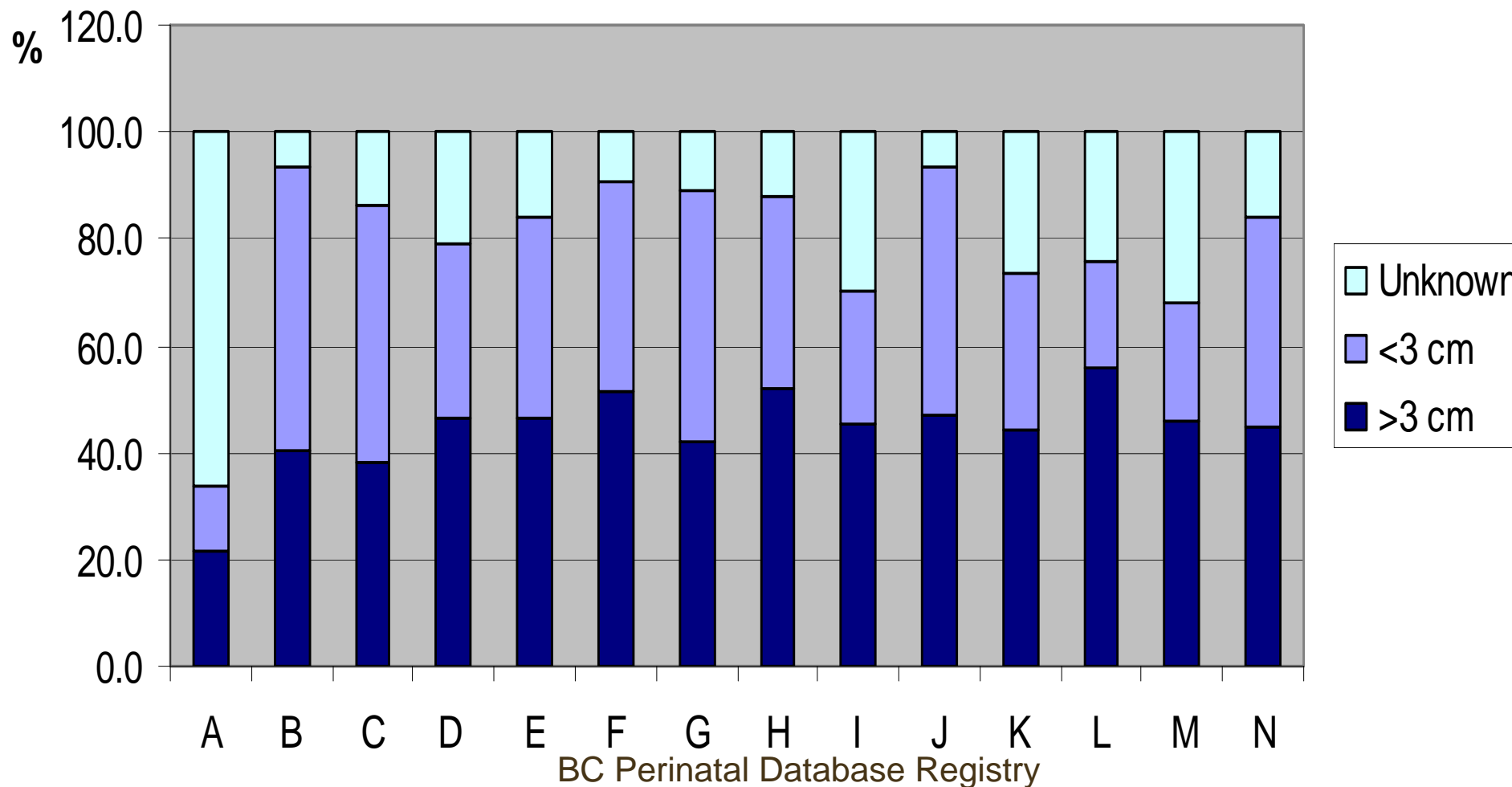
C/S Rate: Maternal Age > 30 Years



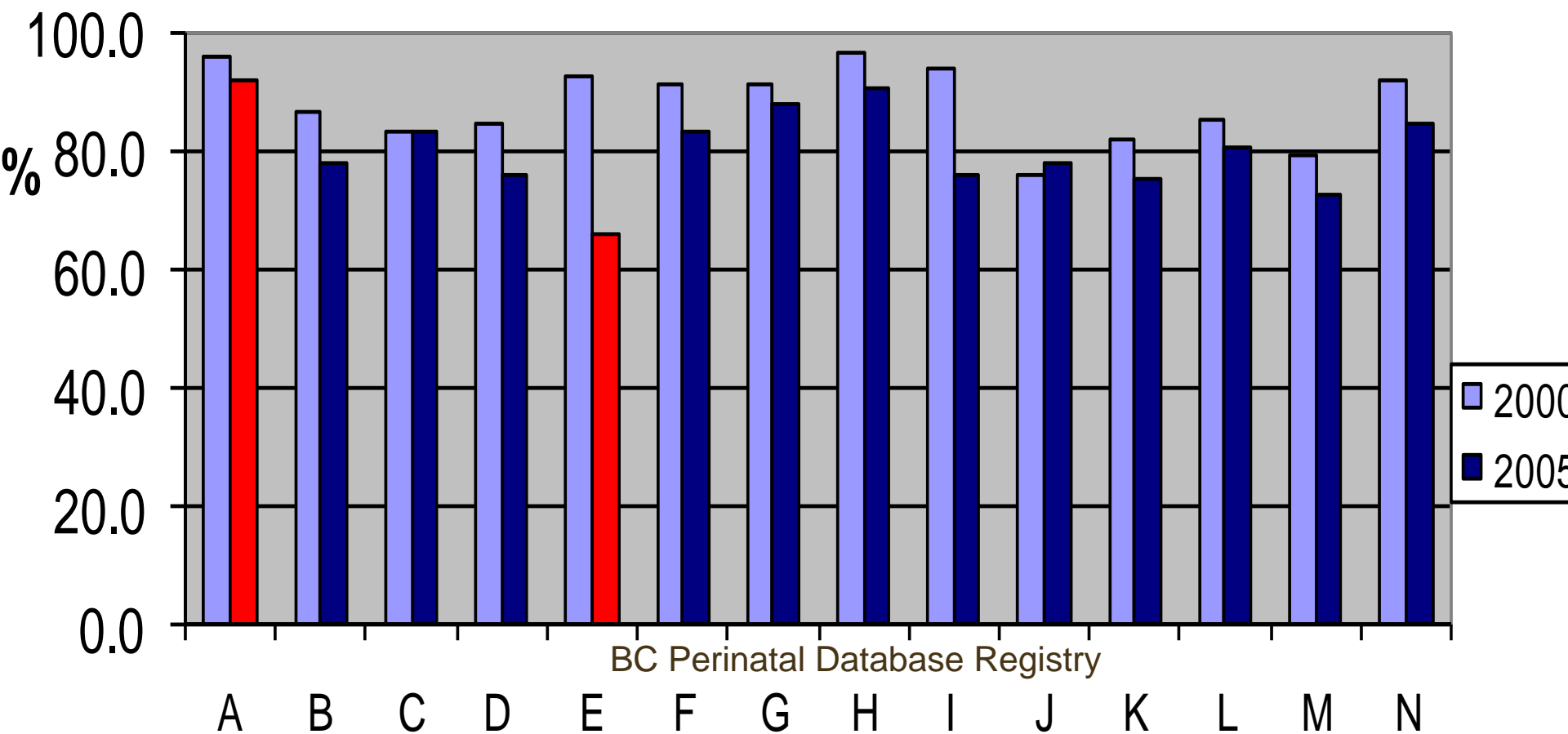
Assisted Vaginal Delivery (All mothers)



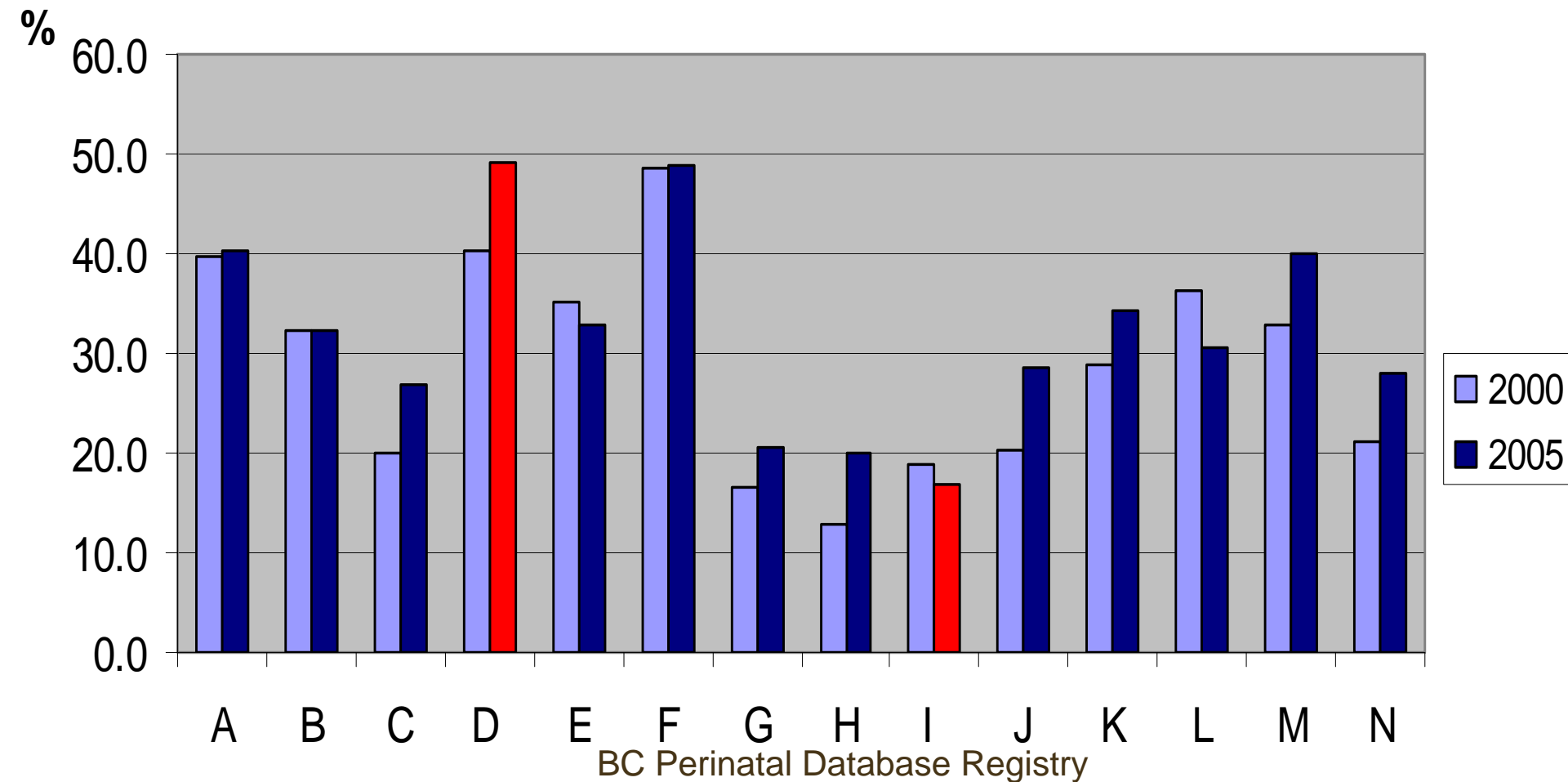
Cervical Dilation on Admission (Spontaneous labour only)



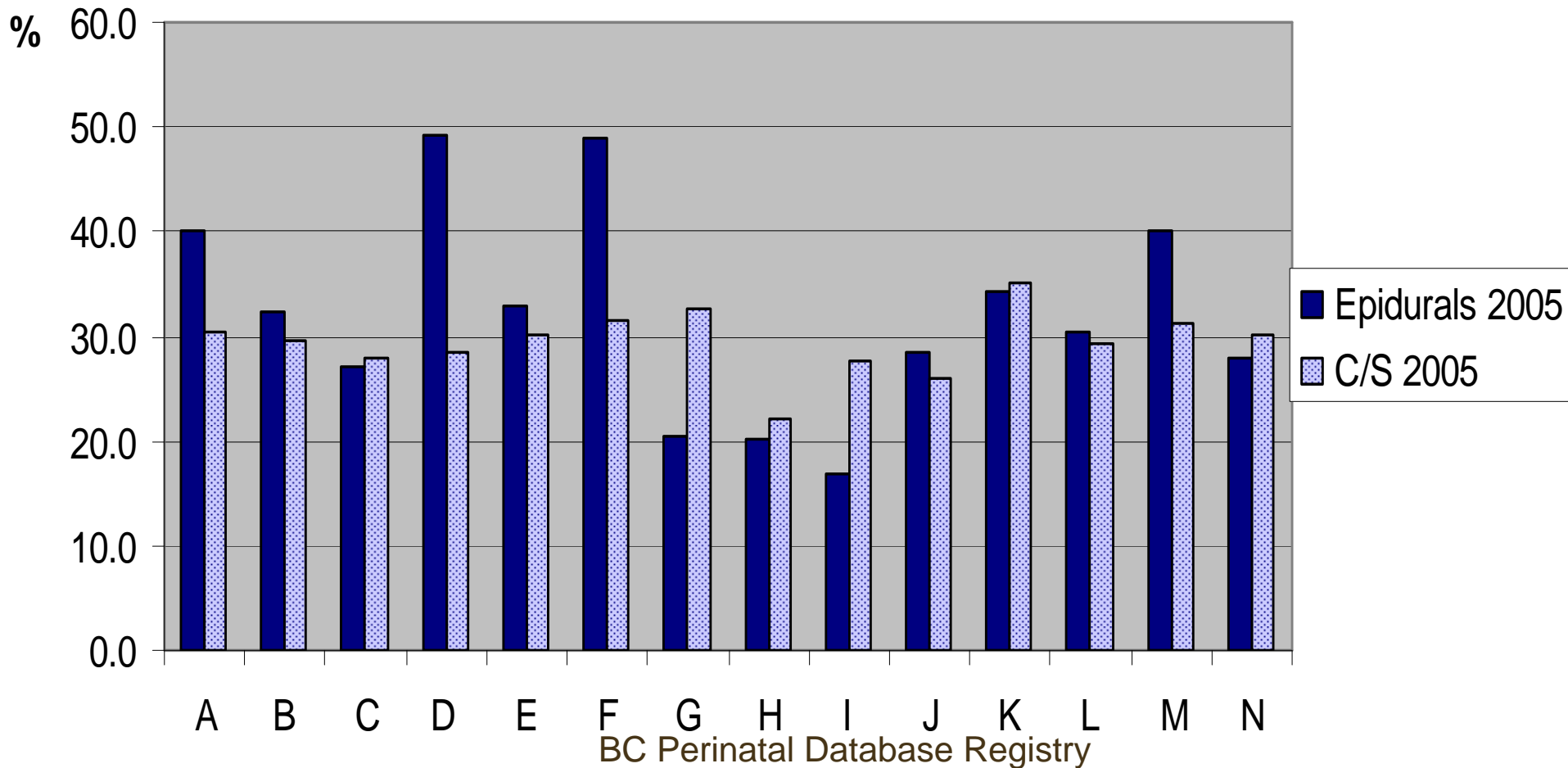
Electronic Fetal Monitoring (Labouring mothers)



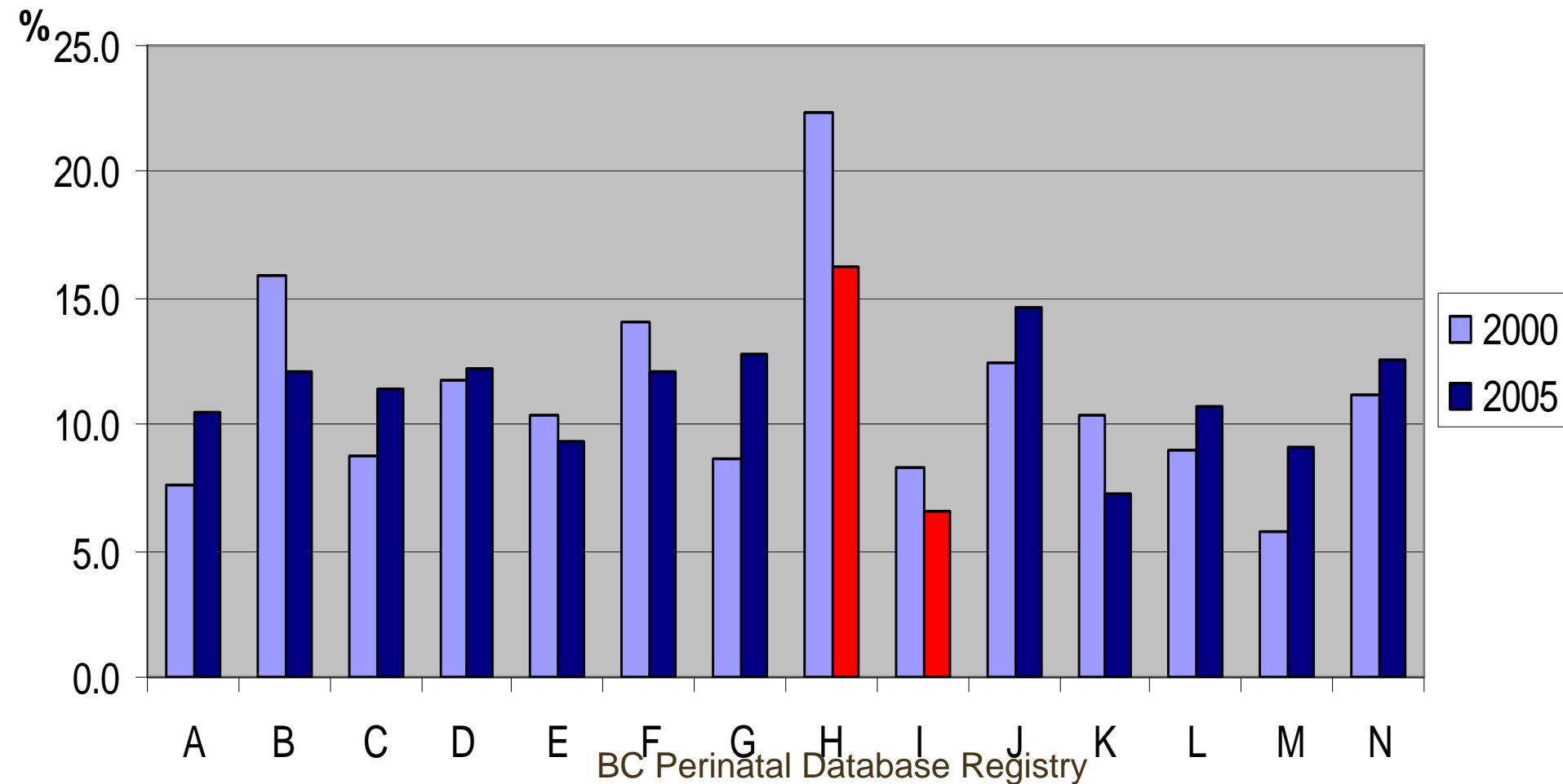
Epidural use among Labouring Mothers



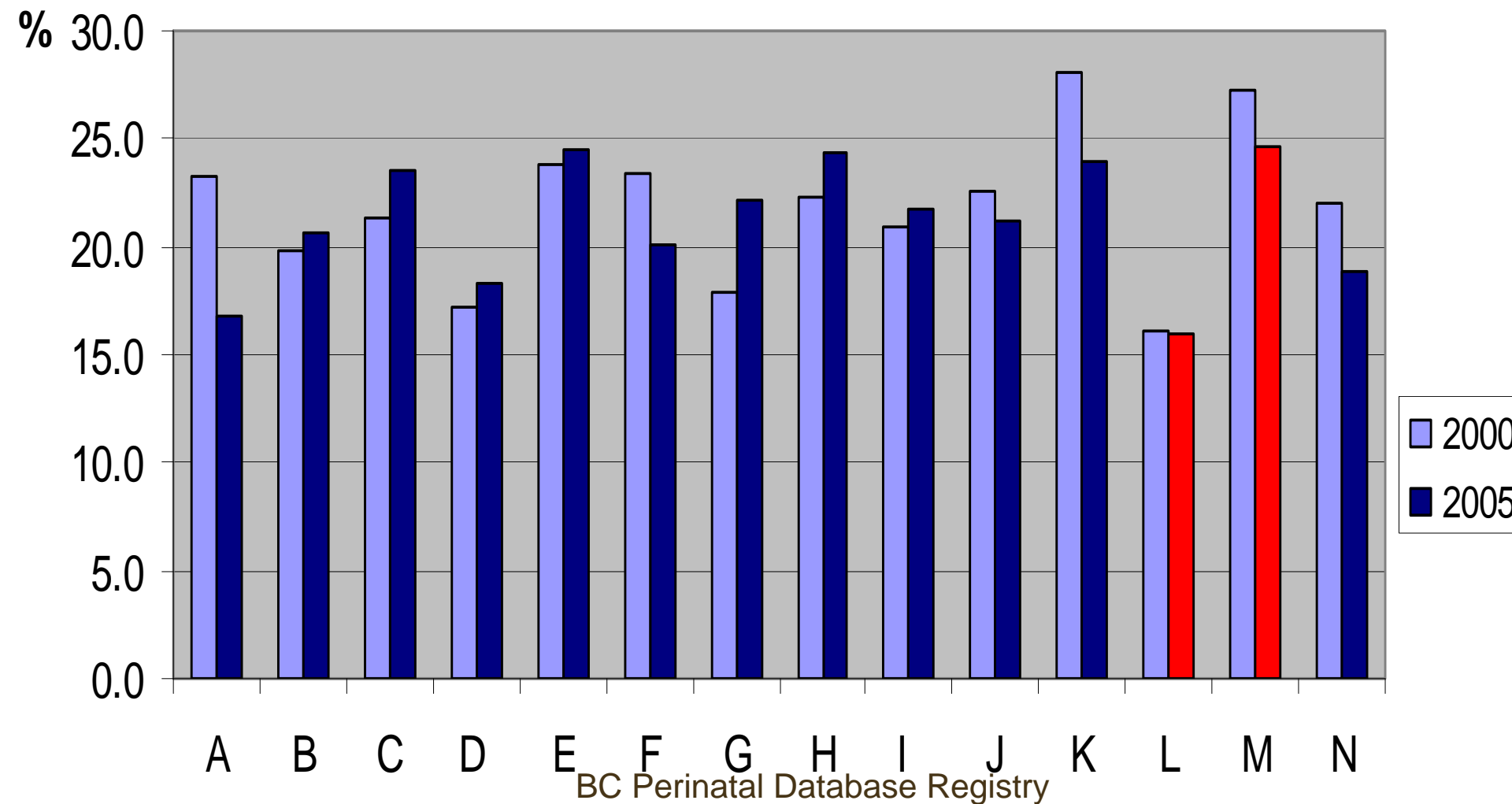
Epidurals in Labouring Mothers & C/S, 2005



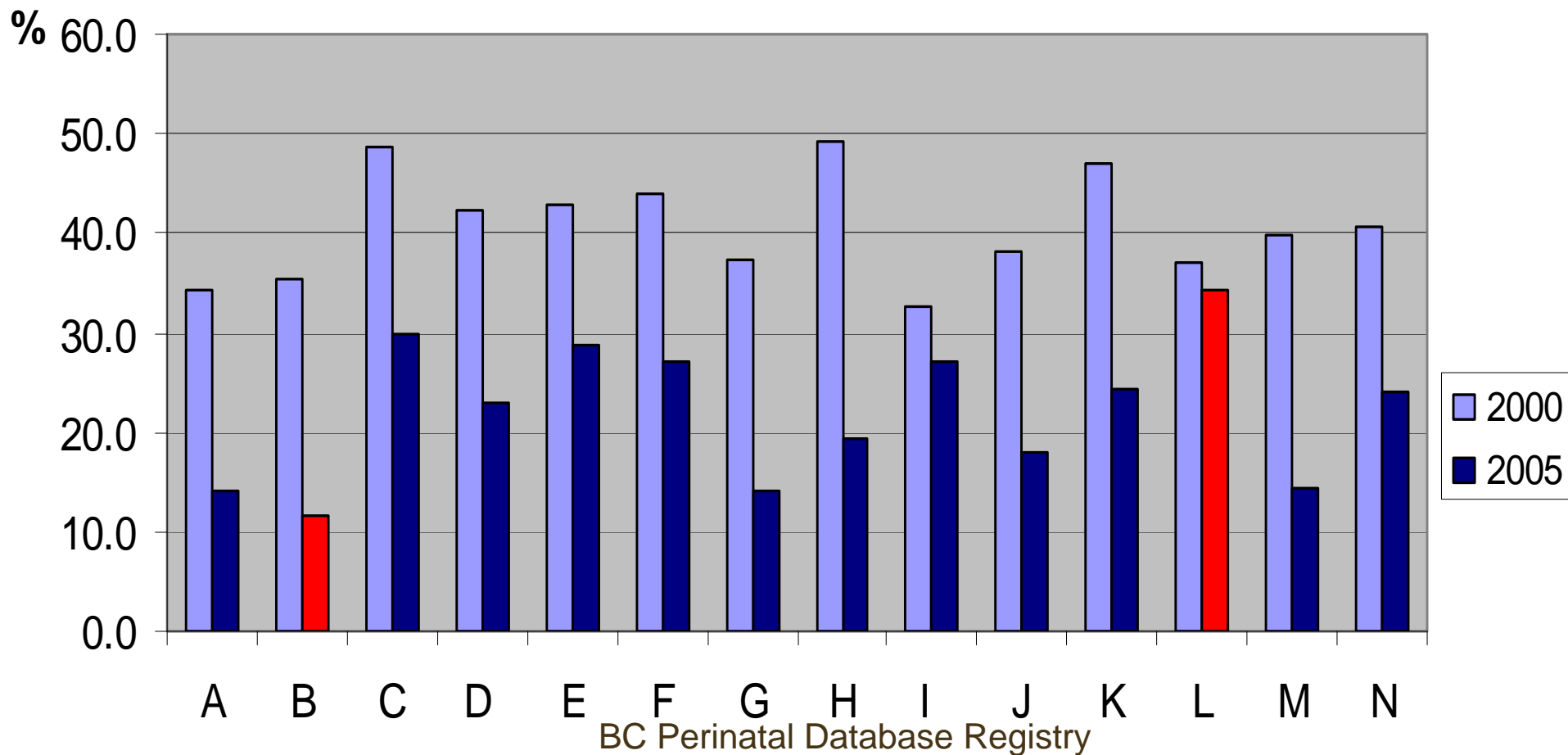
Augmentation of Labour with Oxytocin among Women who Laboured



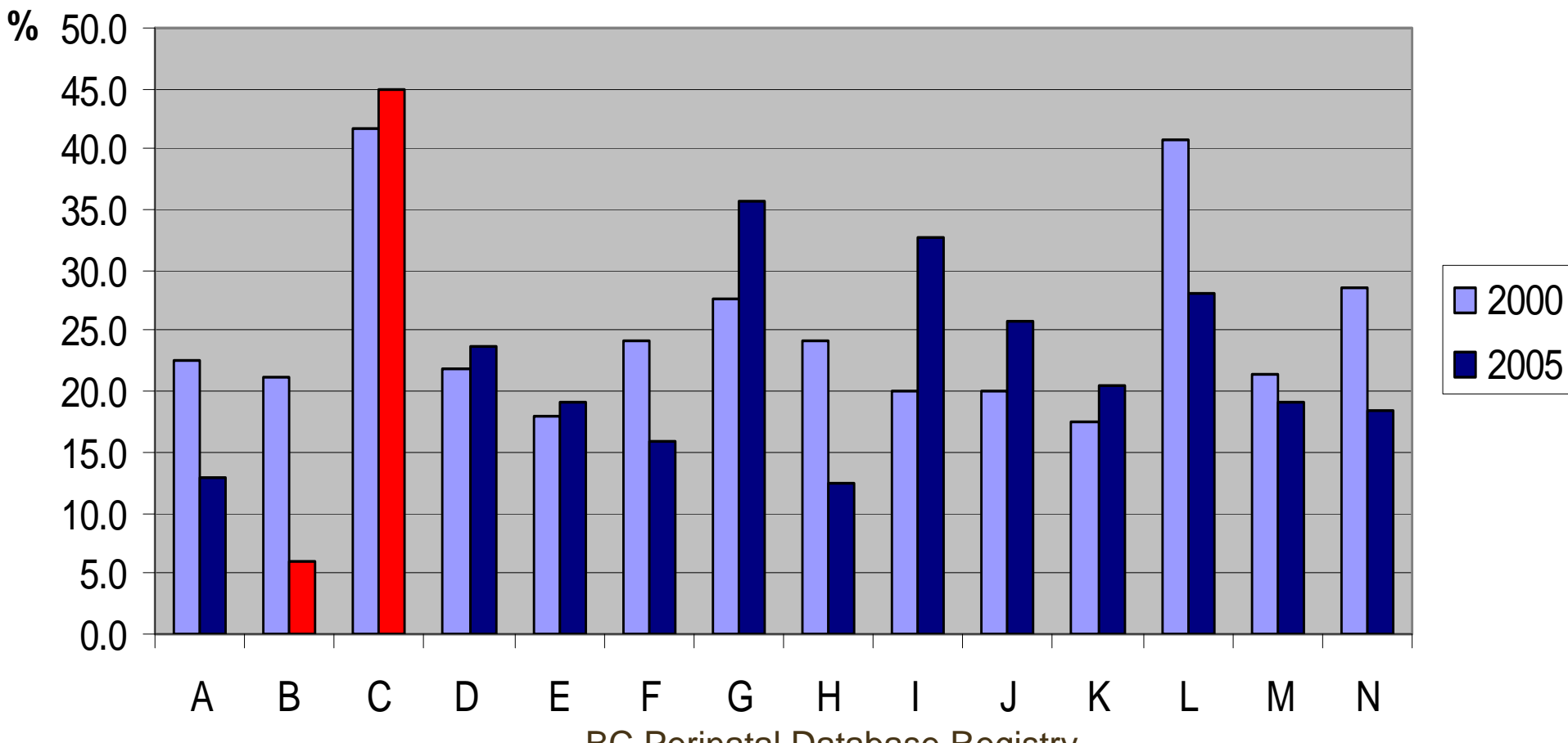
Induction of Labour (All mothers)



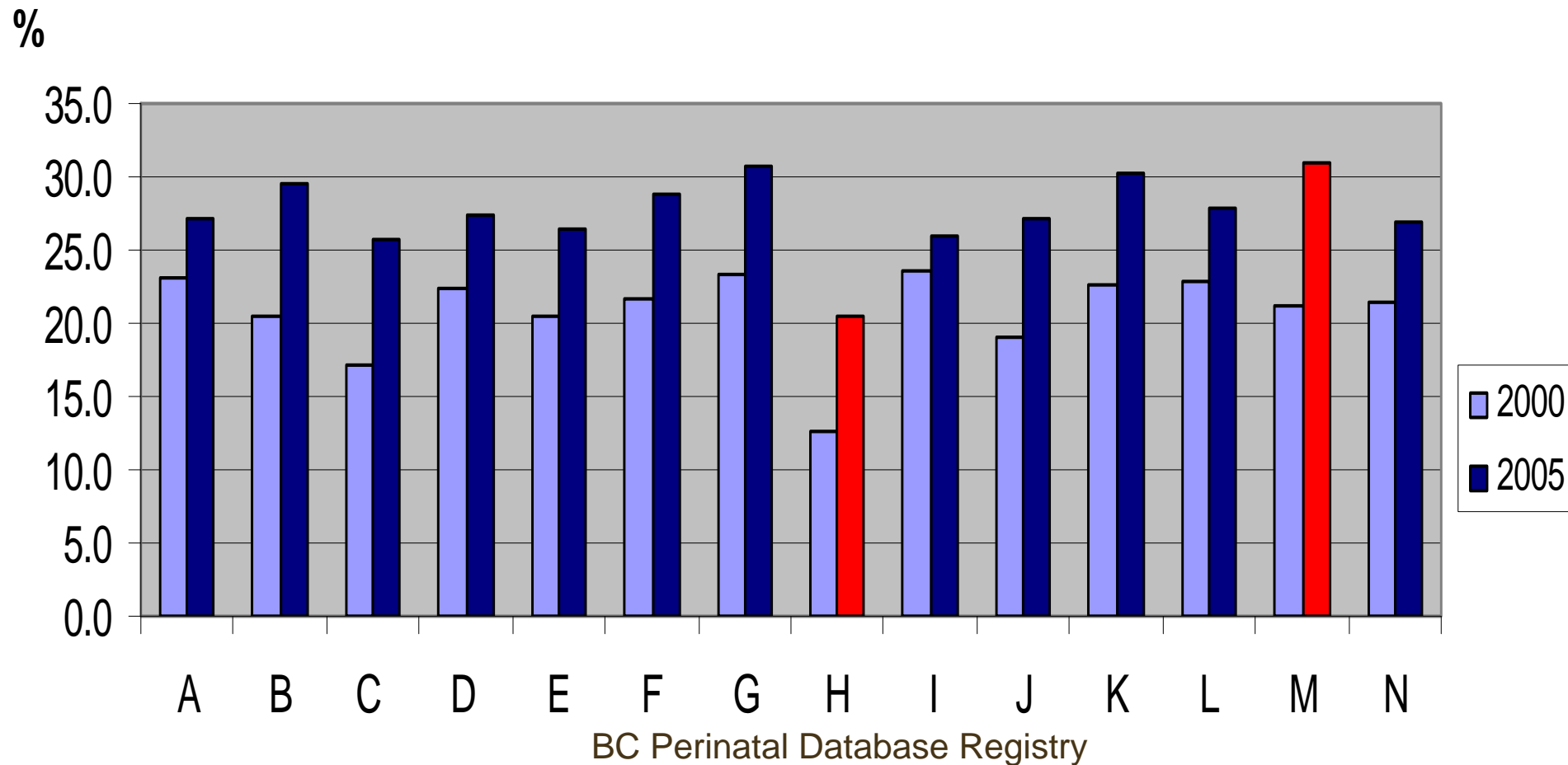
Trial of Labour (At least one previous C/S)



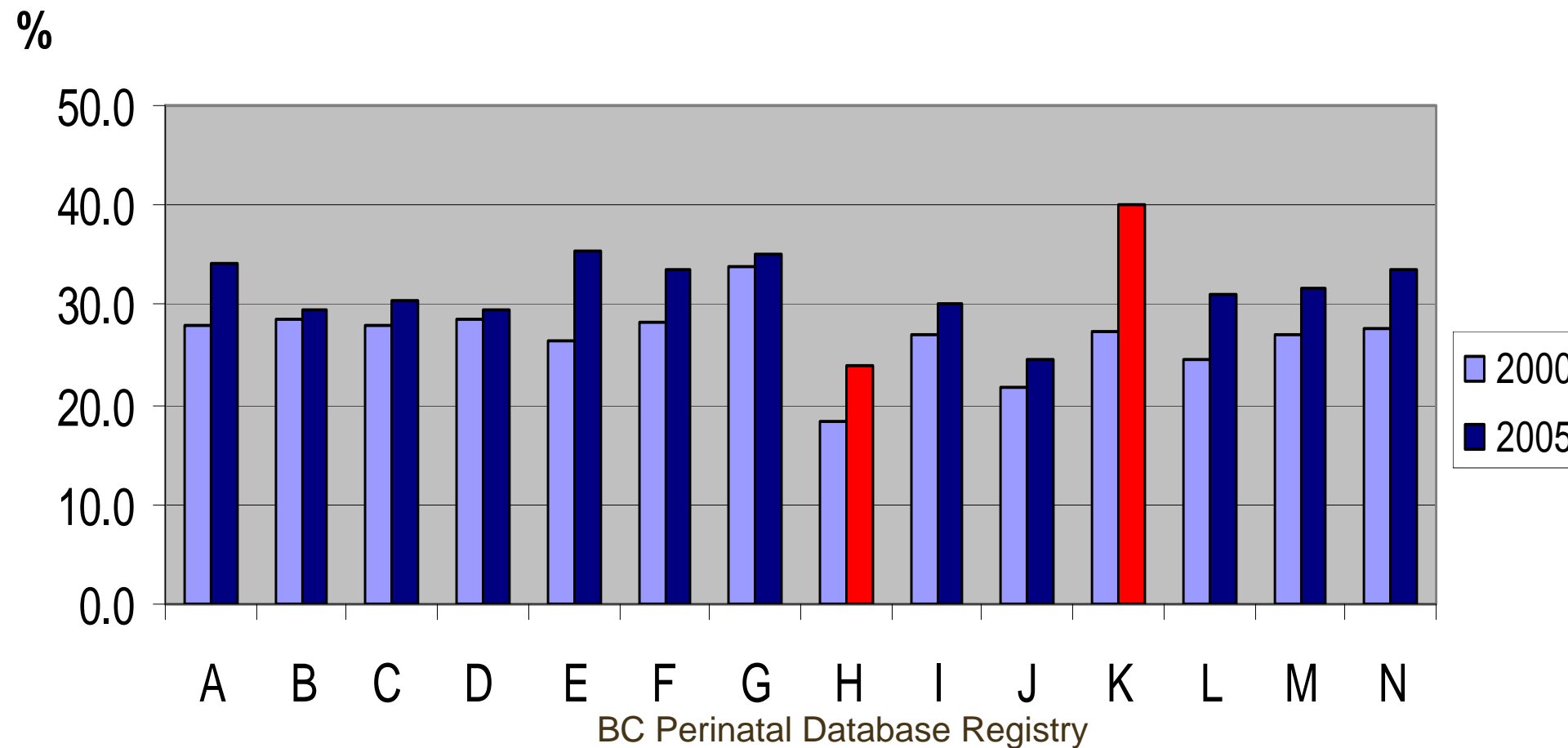
Proportion of 1 min. apgar < 7 with C/S Indication "Fetal Compromise"



C/S Rate: Term Singletons, Multips



C/S Rate, Term Singleton, Nullips



Augmentation Rate (Labouring mothers)

